

Types of Wallpaper

p1 Translation in any direction.

pg Glide reflection.

pgg Two perpendicular glide reflections and 180 degree rotation.

pm Axis translation and reflection in axis.

cm Glide reflection and reflection in a parallel axis.

cmm Two perpendicular reflections and 180 degree rotation.

pmg Reflection in one axis and 180 degree rotation.

pmm Two perpendicular reflections.

p2 Translation and 180 degree rotation.

p4 90 degree rotation.

p4m 90 degree rotation and 4 reflections.

p4g 90 degree rotation and two perpendicular reflections.

p3 120 degree rotation.

p3m1 120 degree rotation and reflection.

p31m 120 degree rotation and different reflection.

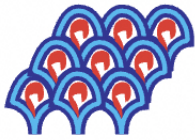
p6 60 degree rotation.

p6m 60 degree rotation and reflection.

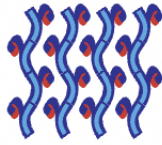
Notes:

- The letter p or c means non-rhombus or rhombus.
- The number after p is the highest order of rotation.
- The m means (mirror) reflection, g means a glide reflection and 1 means nothing there.

p1



pg



pgg



pm



cm



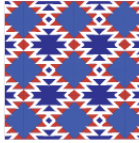
cmm



pmg



pmm



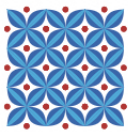
p2



p4



p4m



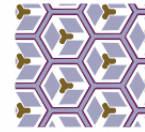
p4g



p3



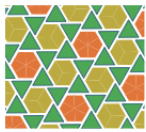
p3m1



p31m



p6



p6m

